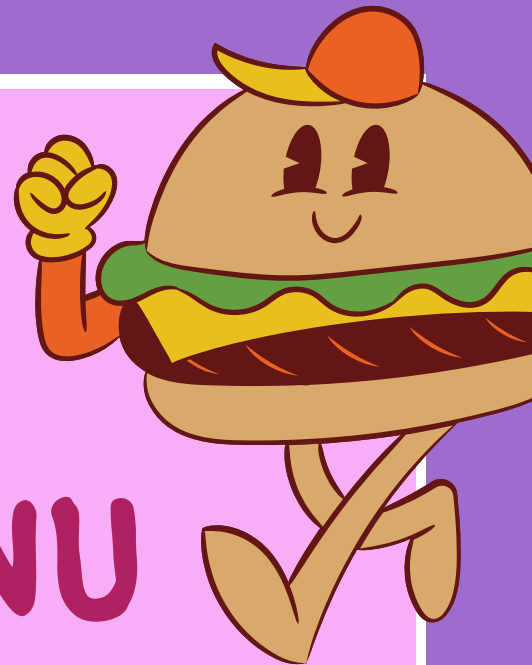


THE
**BATH
BREW
HOUSE**



KIDS MENU

STARTERS

RED PEPPER AND TOMATO HUMMUS AND
CRUDITÉS 233 KCAL (PB) £2.50

MAINS

FISH FINGERS AND CHIPS SERVED
WITH PEAS (GIF) 574 KCAL £6.00

CHEESE BURGER WITH CHIPS 962 KCAL £6.50

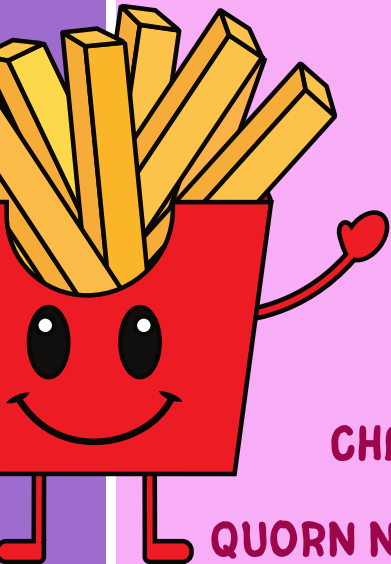
QUORN NUGGETS, CHIPS AND PEAS (PB) 852 KCAL £7.50

PUDDINGS

CHOCOLATE BROWNIE WITH ICE CREAM 283 KCAL (V) £4

BLUEBERRY AND SOUR CREAM CHEESECAKE 158 KCAL (V) £4

YOUR CHOICE OR SORBETS 191 KCAL (PB) (GIF)
AND ICE CREAMS 369 KCAL (V) (GIF) £4



If you have specific dietary requirements or require allergy information, please ask your server
Please be aware that food containing allergens is prepared and cooked in our kitchen
v = Vegetarian, pb = Plant Based (Vegan), gif = Gluten Ingredient Free